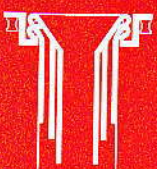
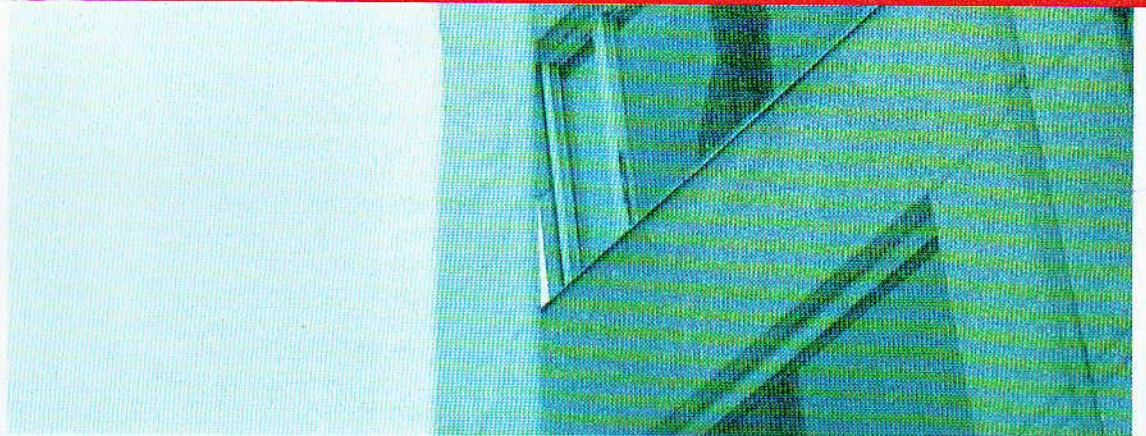


**The Ingström Escape Chute  
a new fast escape system.**



**ESCAPE CHUTE THE NEW CONCEPT OF EVACUATION**



## ONE-ENTRY CHUTE

Recommended in cases where there are no possibilities of installation of multisegment chute (multiple chute).

A single entry serves only the floor on which it is installed. One cannot enter the chute from other floors.

There may be a variety of platforms because each of them is custom constructed. The following platforms were produced among others: roof platforms for 138 m long chutes. Window platforms up to 100 m. There exist also window platforms for private houses (8 m chutes).

It is recommended that you contact with our representative or our company for information which type of the chute would be most suitable.

Pls, remember that one entry chute:

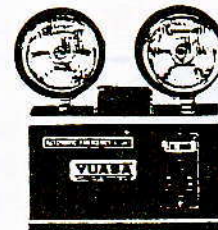
- serves only one floor
- is sensitive to strong wind
- is weather sensitive
- requires a very stabil platform
- requires further maintenance.

Except for the chute and platform the delivery includes:

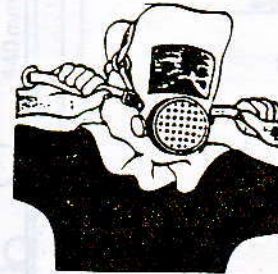
Emergency EXIT lights



Emergency lights



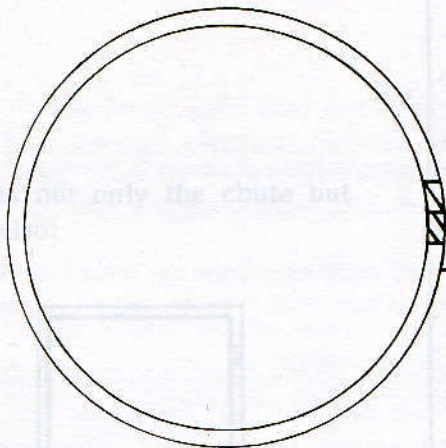
Escape mask 30 min.



CB radio

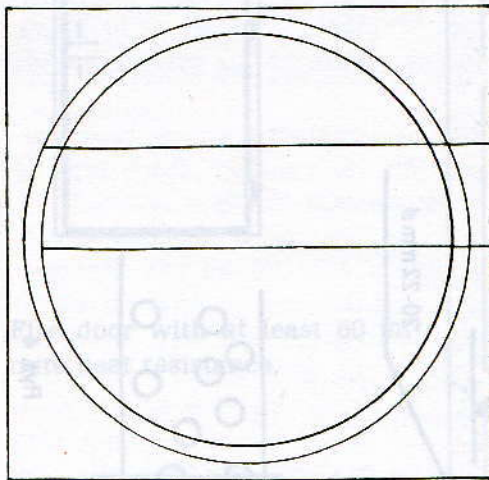


MULTISEGMENT CHUTE



**QUALITY CHARACTERISTICS OF THE STANDARD ALUMINIUM PLATFORM: APPLICATION RANGE: FIRE ELEVATORS; EXTERNAL CHUTE PLATFORMS**

Aluminium pipe of approx 20–22 mm  $\varnothing$   
 Steel pipe of approx. 20–22 mm  $\varnothing$   
 depending of the length of the chute,  
 pipes connected with bolts and cotter pins  
 depending on the length of the chute

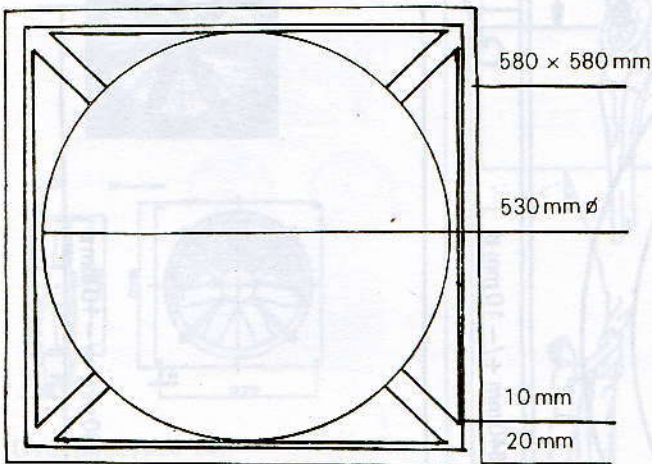


620 x 620 mm

Aluminium platform ALSI 6

copper	— 3–5%
ferrum	— 1,3%
maganese	— 0,3%
magnesium	— 0,2–0,6%
nickel	— 0,3%
led	— 2,0%
PII/SE	— 5,0–7,0%
tin	— 0,1%
titanium	— 0,2%

Load capacity of the platform 5 tons



Aluminium pipe:  
 20–22 mm diameter;  
 fabric thickness 2–4 mm



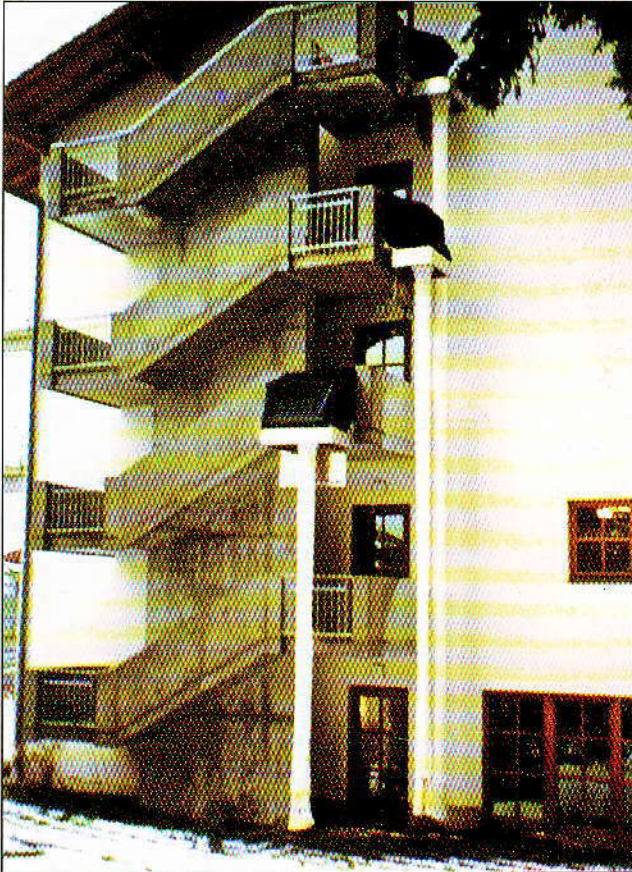
10 mm  $\varnothing$



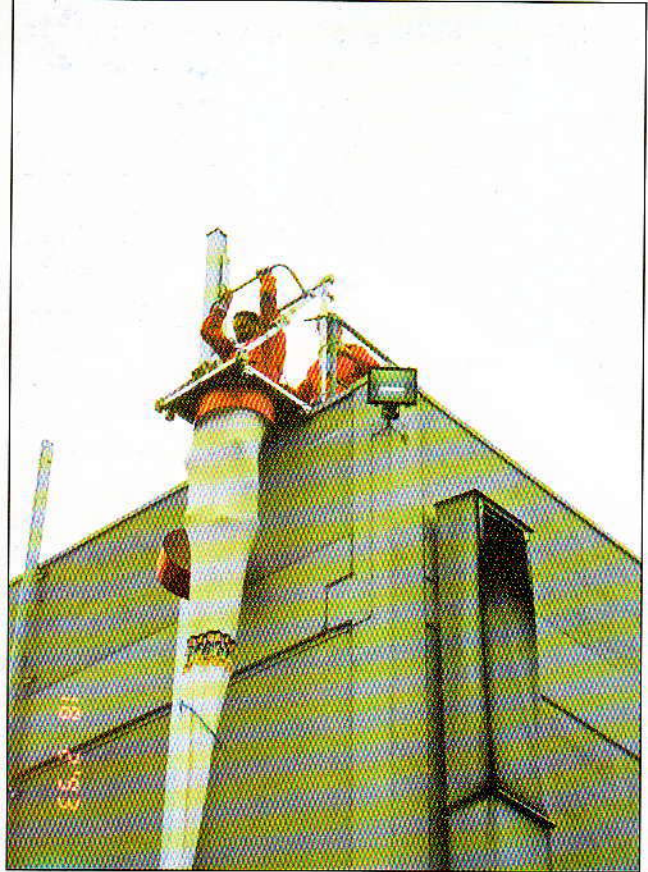
On the way down 71 metres in Taipei  
Taiwan

Air traffic control Tower Warsaw  
airport Poland



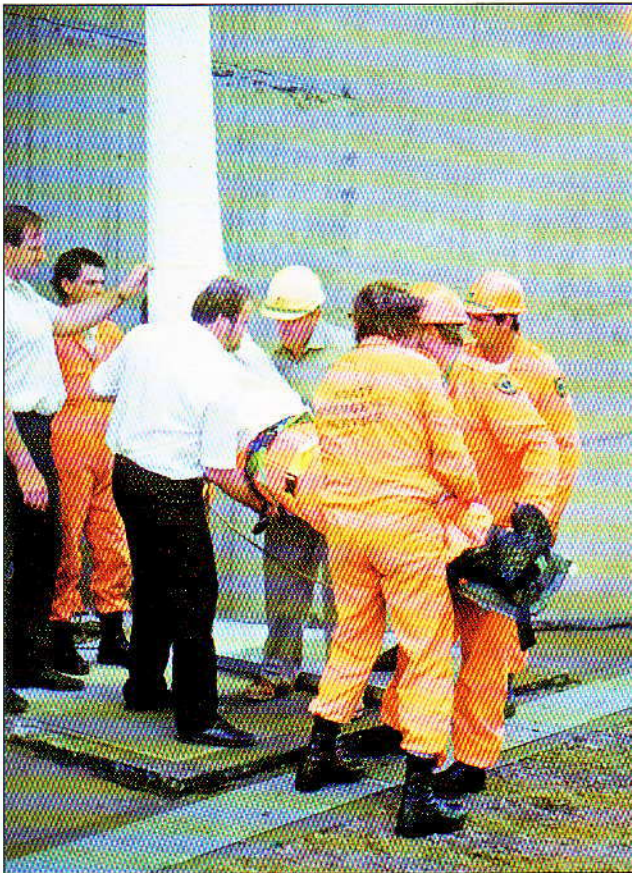


Klinik Bavari — Germany. Total 8  
unif of single entrance chutes

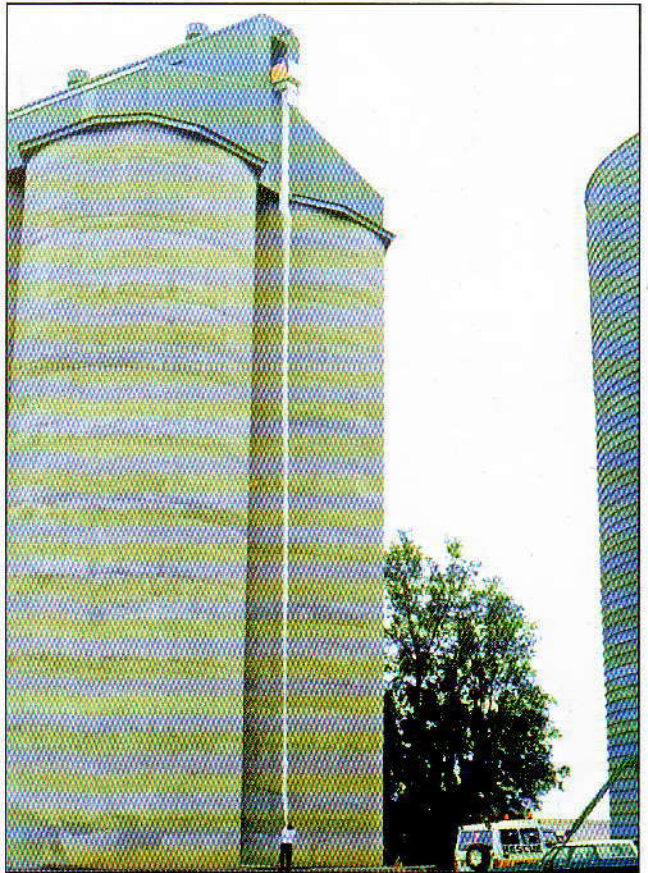


Uni Storebrand security training cen-  
ter, Oslo, Norwegen. Open training unit

Rescue from stretcher in Australia  
N. S. W.



Silos with 30 metres chutes N. S. W.  
Australia



## Quality specification

The chute is constructed of three layers. Describing from the inner layer:

### LAYER NO 1 (inner)

Is made of ARAMID, or Twaron fabrics. This layer supports the whole weight of the chute.

### LAYER NO 2 (MIDDLE)

Provides a speed restraining effect and is made from Modacryl and Elastomer both very flexible fibres, which can increase their dimensional capacity by three times. It operates effectively in a temperature range from -45 degrees to +175 degrees C.

### LAYER NO 3 (outer)

Protects the chute against flames and is made of 100% fibreglass. It resists temperatures of up to 650-800 degrees C. The diameter of this fibreglass layer is so large that a free space of approx. 10-15 cm forms around the inner layers of the chute, protecting these layers from flames and preventing overheating.

**AB MOBILTEX OY KEEP THE RIGHT TO CHANGE MATERIAL WITHOUT FURTHER NOTICE.**

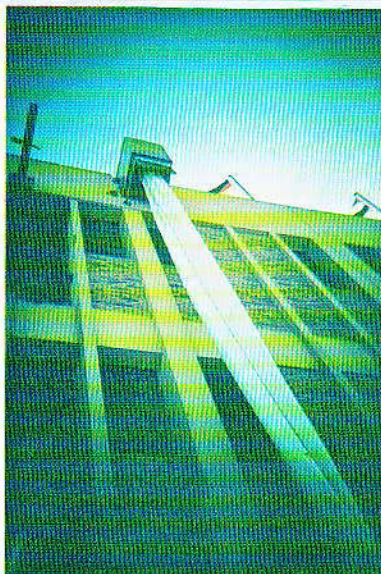
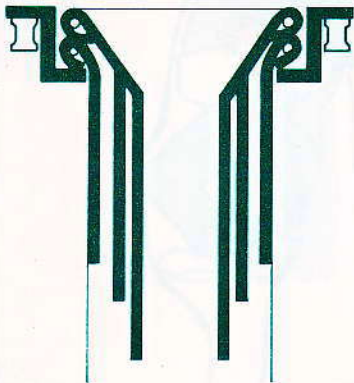
## Manufacturers guarantee

The guarantee period for the INGSTRÖM ESCAPE CHUTE is eighteen (18) months from the date of delivery and embrace replacement of damaged parts depend of production fault.

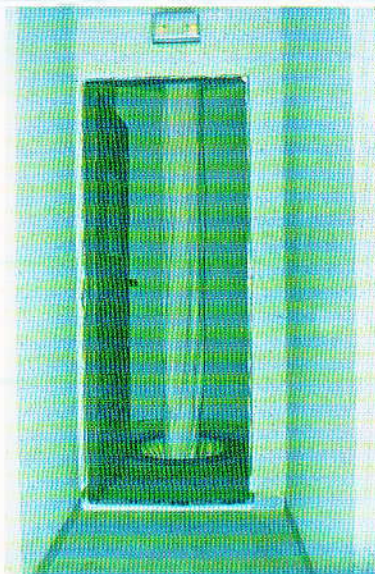
The purchaser may extend this guarantee period for up to ten (10) years by entering into a maintenance program (with the exception of the fibreglass layer) with two (2) service per year.

**MANUFACTURED IN SWEDEN (EU) by  
MOBILTEX EVACUATION SYSTEMS**

[www.mobiltex.se](http://www.mobiltex.se)



ON-WAY



MULTI-SEGMENT



MOVABLE

THE ESCAPE CHUTES ARE ALWAYS TAILOR-MADE TO SUIT THE  
INSTALLATION SITES FOR FURTHER TECHNICAL DETAILS CONTACT:

INGSTRÖM ESCAPE CHUTE OFFICE OR DISTRIBUTOR:



### ESCAPE CONSULT MOBILTEX (S) PTE LTD

"INGSTRÖM ESCAPE CHUTE®"

196 Pandan Loop #05-09, Pantech Industrial Complex  
SINGAPORE 128384  
Tel. : +65 6776 0910  
Fax. : +65 6295 1379  
E-mail : [mobiltex@singnet.com.sg](mailto:mobiltex@singnet.com.sg)  
website : <http://www.escapeconsult.com>